

Redeemer Announcements – February 15, 2026

Our Mission

We Gather, Grow, and Go to the Glory of God

Sun	8:00 AM	The Church Gathers for Worship/Communion
	9:15 AM	Bible Hour
	10:30 AM	The Church Gathers for Worship/Communion
Mon	10:00 AM	Morning Bible Group @ Nell's
	4:00 PM	Design Committee Meeting @ Excel
	6:30 PM	The Church Gathers for Worship
Tues	7:00 AM	Faculty Meeting
	1:00 PM	Civil/Landscaping Final Owner Review @ Excel
	6:30 PM	Area Women's Bible Study @ Faith
Wed	8:30 & 10:00 AM	Moms & Tots Sessions
	1:00 PM	Plumbing Final Owner Review @ Excel
	1:30 PM	Preschool Bible Hour
	3:30 PM	The Church Gathers for Ash Wednesday Worship/Communion
	4:15 – 6:00 PM	Church Supper-Elders' Chili
	5:00 PM	Choir Practice
	6:30 PM	The Church Gathers for Ash Wednesday Worship/Communion
Thu	8:20 AM	Preschool Chapel
	12:20 PM	Preschool Chapel
	1:00 PM	Mechanical & Structural Final Owner Review @ Excel
	6:30 PM	Bible Basics
Fri	8:25 AM	Redeemer School Chapel
Sat	8:00 AM	Men of His Word Conference
Sun	8:00 AM	The Church Gathers for Worship
	9:15 AM	Bible Hour
	10:30 AM	The Church Gathers for Worship

SERVING TODAY

Accompanist: Isaac Lundberg

Pastor Chris Rathje

Communion Assistants: Scott Herrewig, Gregg Heiman,
David Putz, Andy Nygaard

GATHERING FOR WORSHIP

Sunday 8 th	8:00am:	151
	10:30am:	162
Monday 9 th	6:30pm:	43
	Total:	356

Parents, please take this opportunity during Lent to model for your children how central Christ is in your life. Join your Redeemer for midweek worship and for a fellowship meal as well.

CHURCH MEALS DURING LENT – These meals, served in-between worship services on Wednesdays during Lent, are a great way for us to *Gather in fellowship* as a church family, while taking a night of meal prep off your family's to-do list.

This week, the church elders' families are serving their traditional chili supper. They're also serving hot dogs, sausage & cheese, salad, and ice cream.

Volunteers are needed for the last two Wednesdays— March 18 & 25. A volunteer group will serve on March 18, organized by Pastor Borgwardt. The food will all be provided (but we need a volunteer to help with a Thrivent Action Card). We'll need volunteers to serve.

A Hunt & Harvest meal will be served on the 25th. Can you provide something from your hunt, field, or garden? Would you be able to serve?

Sign-ups are on the bulletin board. Thank You!

MEDITATIONS – The new issue of *Meditations* (starts March 1), a daily devotional resource, is available by the office window. Pick up a copy today.

VOTERS' MEETING ON MARCH 1ST in the sanctuary immediately following the late service. The sole agenda item for this meeting is to seek final voter approval to accept an offer of \$1.44 million for the purchase of our current church property. Copies of the offer are available in the church office for review.

The interested buyer is a federally funded organization and has already applied for financing through available grant programs.

All members are encouraged to attend.

WLA – HOW CAN I SUPPORT THE NEW CAMPUS? First, go to the Lord in prayer seeking His guidance on how you can support the new campus plans. Please reach out to Kevin Ehlke at WLA with any questions at 920-539-4041 or kehlke@wlvikings.org. You can also attend one of the new campus listening sessions to learn more about the new campus plans and how you can support them. The next sessions are on Feb 19th, 21st, or 24th @ 6:00 pm, or Feb 28th @ 10:00 am. All sessions are at WLA. More information can be found at building.wlvikings.org.

ASH WEDNESDAY is this Wednesday, February 17th. This special service of repentance with a long history in the Christian Church marks the beginning of the season of Lent. We'll have two services – at 3:30 and 6:30pm. Both services include the Lord's Supper.

WLA HOT LUNCH HELP NEEDED—March 9-13 is Redeemer's week to provide helpers for the WLA hot lunch program. We need two people per day from 9:30-1:30. There is a sign-up sheet on the bulletin board or call Jean Jacobs at 920-602-8964 to sign up or if you have any questions. Thank you!

LADIES SOCIETY We will be collecting a free-will offering next Sunday/Monday, February 22/23 and March 1/2, on behalf of the LWMS Winnebago Circuit. These offerings are used to support WELS World Missions as well as the mission speakers at our spring & fall rallies.

LADIES SOCIETY is collecting pill bottles for the Central African Medical Mission (CAMM). If you would like to donate your empty, washed, & peeled pill bottles you will find a bin in the gathering area. You can find more

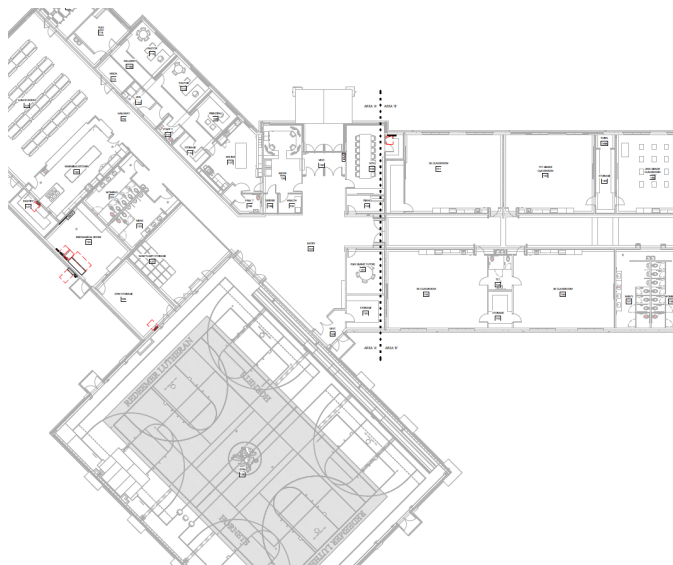
information about donating pill bottles to CAMM in the gathering area by the office window.

SOCCER CAMP LEADERS NEEDED - We need to fill most of our lead positions for Soccer Camp with new volunteers this year. Most lead coaches from previous years aren't available, and our called workers will have extra building project responsibilities this summer. They'll still be involved with camp this, but we'll need more members than ever to serve alongside them. Positions to be filled: 6 lead coaches, 2 Bible lesson teachers, and 1 craft coordinator. When we fill those roles, we'll lock in the Soccer Camp for June 15-18. Contact Pastor B at 920 204-4015 or jborgwardt@redeemerfdl.org to volunteer or to get more details. Thank you!



BUILDING ON FAITH

TELL THE NEXT GENERATIONS



FINAL REVIEWS for many disciplines are happening this week. Two meetings last week (interiors, electrical) and four this upcoming week (design committee, civil & landscaping, plumbing, and mechanical & structural) have Redeemer members nearly taking up residence at Excel's offices.

Construction drawings will be ready by the end of the month to go out for bid in March.

BUILDING COMMITTEE FORMED – A new building committee has been formed to work with Excel and Catalyst through construction. Members are Peter

Hagen, Gregg Heiman, Keith Weigand, Principal Lecker, Pastor Borgwardt, and chaired by Chris Kohnke.

VOLUNTEER PROJECTS will begin in the Fall and will be especially numerous December through February. Thank you to everyone who has submitted their names to possibly volunteer on various elements. We recognize that schedule availability will play a large part in who is able to serve when. Submitting your name doesn't commit you, but it does give us a nice list of members whom we'll contact when those various elements are coming up on the calendar. The main areas are:

- Painting
- Finish Carpentry
- Landscaping
- Cleaning
- Hospitality
- General

If you'd like to add your name to our growing list, you can fill out a volunteer sheet by the office window or contact Pastor Borgwardt.

BUILDING ON FAITH CAMPAIGN QUARTERLY UPDATE will come at the end of this month.

Thank you for keeping our ministry expansion in your prayers!